

WARON

BY GRS®







GRS is proud to introduce the new Jura by GRS line of tools for stone setters and jewelry artists. This is a perfect collaboration between innovation and quality manufacturing.

A world-renowned diamond setter, Jura has made his name with precise setting and unimaginably complex designs. He has faced the challenges unique to stone setting and designed innovative solutions to overcome those challenges. Jura's system is ergonomically conscious for long hours at the bench and creates an environment for maximum efficiency. These tools will revolutionize your workflow.

## C O N T E N T S

CLASSIC QUICK CHANGE WORKHOLDING	<b>2</b>
3X WORKHOLDING	<b>12</b>
MUST HAVES	<b>20</b>
ORGANIZERS & SMALL GOODS	<b>22</b>
ACCESSORIES	<b>25</b>
DEALER DIRECTORY	<b>26</b>



# CLASSIC QUICK CHANGE **WORKHOLDING**

**QC FIXTURE TABS SLIDE EASILY INTO THE MASTER JAWS.**



**CHANGE WORKHOLDING QUICKLY AND EFFICIENTLY.**

## **GRS® MicroBlock® Vise**

Also Available: with MicroBlock® XL,  
Adapter for GRS® Standard Block

### **QC Workholding Fixtures**

Shown: 6mm Top  
with Groove

### **Master Jaws**

Connect multiple  
fixtures

### **5 mm Hex Key**

Not shown



*"If I can hold it, I can set it."*  
— Jura



20 MM  
ROUND TOP



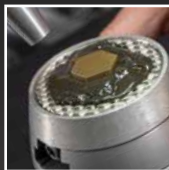
OUTSIDE RING  
HOLDER



JURA CLAMPS  
for horizontal fixtures



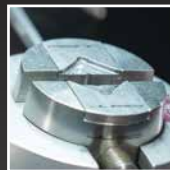
SHELLAC  
PLATE

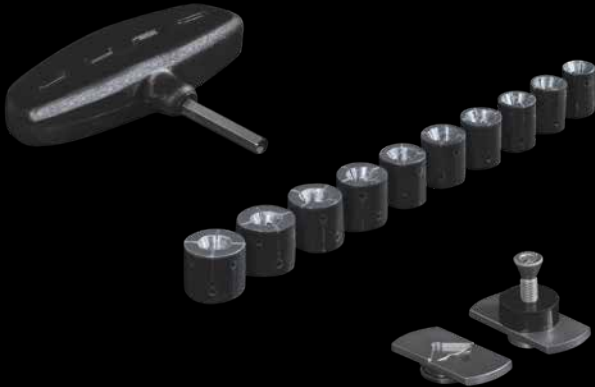


DRILL HEAD  
HOLDER



FLAT CLAMPS  
WITH GROOVE





WATCH THE VIDEO



## QC Basic Set With MicroBlock®

500-508

The Basic Set is ideal for artists working with rings. It utilizes the Jura Master Jaws and Quick Change fixtures to create a system that has been designed for ultimate work efficiency. The QC approach allows you to switch fixtures in just seconds. The horizontal ring holder has an independent locking system, allowing separate tension adjustments for the collet and the rotation of the ring. The vertical ring holder is a simple and effective vertical ring solution. Ten expandable collets ensure finding the correct size for your work (Sizes 13–22 mm). A grooved set of flat clamps will hold practice plates and other flat items both square and round. They can also be used for holding beading tools for polishing and sharpening.

*Includes: MicroBlock® with Jura Master Jaws, Small Vise Base, 5 mm Hex Key, Organizer, and the following QC Fixtures: Horizontal Inside Ring Holder, Vertical Inside Ring Holder, 10 Plastic Collets, and Flat Clamps with Groove.*

*Also Available:  
Without MicroBlock®*

500-509

**For GRS® Standard Block**

500-512

**With MicroBlock® XL**

500-526





# QC Complete Set With MicroBlock®

500-510

The Complete Set expands upon the Basic Set and includes an amazing assortment of workholding solutions for any setter. Specialized clamps are ideal for uniquely-shaped projects, including rings, pendants, earrings, bur sharpening, drill making, and beading tool sharpening. Grooved jaws allow you to quickly remove the workpiece and re-sharpen beading tools in one fixture. Each jaw can be customized using Thermo-Loc® for production-style setting. Straight top (20 and 40 mm) fixtures provide access for multi-sided setting. Brass points can be customized to hold a variety of things, including sphere-shaped items. Shellac and Thermo-Loc® cylinders provide support for fragile ring work.

*Includes: MicroBlock® with Jura Master Jaws, Small Vise Base, 5 mm Hex Key, Organizers, and the following QC Fixtures: Horizontal Inside Ring Holder, Vertical Inside Ring Holder, 10 Plastic Collets, Flat Clamps with Groove, Outside Ring Holder, 6 mm Cylinder Top with Groove, 10 mm Cylinder Top, 20 mm Round Top, 20 mm Straight Top, 40 mm Straight Top, Engravers Clamps with 2.35 mm Holes, Thermo-Loc® Engravers Clamps, Shellac Plate, Thermo-Loc Cylinder, Shellac Cylinder, Tapered Point Holders, and Tapered Ball Holders.*

*Also Available:  
Without MicroBlock®*

500-511

**For GRS® Standard  
Block**

500-513

**With MicroBlock® XL**

500-527



# QC Advanced Set with MicroBlock®

500-517

The Advanced Set is the most complete workholding system on the market. Jura has designed workholding solutions for almost any job. This system saves the user from the time and frustration of figuring out how to properly hold a piece for setting or jewelry engraving. In addition to workholding solutions, this set includes a variety of useful accessories. The hand chucks are perfect for use with stone pushers, beading tools, burnishers, bead splitters and more. The digital dividers and ceramic scribe are useful for precision layout. Tweezers and a carbide pick are great accessories that will serve many purposes in your daily work.

*Includes: MicroBlock® with Jura Master Jaws, Small Vise Base, 5 mm Hex Key, Organizer, and the following QC Fixtures: Horizontal Inside Ring Holder, Vertical Inside Ring Holder, 10 Plastic Collets, Flat Clamps with Groove, Outside Ring Holder, 6 mm Cylinder Top with Groove, 10 mm Cylinder Top, 20 mm Round Top, 20 mm Straight Top, 40 mm Straight Top, Engravers Clamps with 2.35 mm Holes, Thermo-Loc® Engravers Clamps, Shellac Plate, Thermo-Loc Cylinder, Shellac Cylinder, Tapered Point Holders, Tapered Ball Holders, and Drill Head Holder. It also includes 10 Hand Chucks, Digital Dividers, a Ceramic Scribe, Tweezers, and a Carbide Pick.*





**Vertical Ring Holder & Plastic Collets**

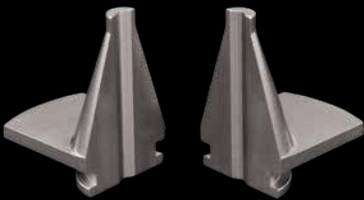
Included with all QC Sets, plastic collets sold separately starting on **page 24**

# QC Master Jaws

For use with QC Workholding Fixtures. Quickly change fixtures for optimal workholding solutions.

Compatible with GRS® MicroBlock® and MicroBlock® XL

## QC WORKHOLDING FIXTURES

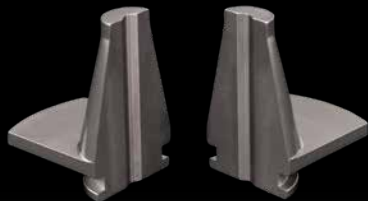


### 6 mm Cylinder Top

500-001

Ideal for making tools, holding small workpieces, and more.

*Fits QC Classic or 3X Vise*

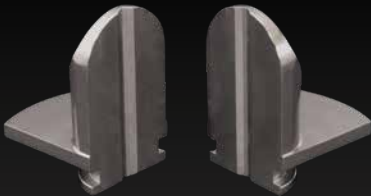


### 10 mm Cylinder Top

500-002

Good for clamping small work pieces such as earrings.

*Fits QC Classic or 3X Vise*

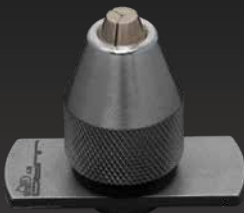


### 20 mm Round Top

500-003

Designed to hold rings, round pendants, and more.

*Fits QC Classic or 3X Vise*



### Drill Head Holder

500-501

Use this vertical chuck to custom-make tools such as beading tools, drills, and more. Also great for holding work such as earrings.

*Fits QC Classic or 3X Vise*



## QC Master Jaws

The Jura Master Jaws are the key to using QC Workholding Fixtures. The jaws feature a unique shape that allows fixtures to slide in and out quickly and create maximum stability. They replace the standard jaws in any GRS® MicroBlock® or MicroBlock® XL.

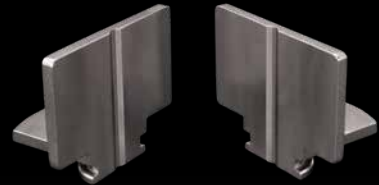


### 20 mm Straight Top

500-004

This mid-sized clamp creates ideal workholding for multi-sided setting.

*Fits QC Classic or 3X Vise*



### 40 mm Straight Top

500-005

This wide clamp creates ideal workholding for multi-sided setting.

*Fits QC Classic or 3X Vise*



### Engraver's Clamp with 2.35 mm Holes

500-006

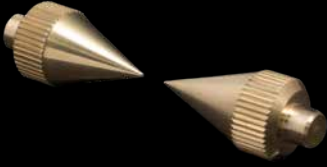
A set of vise jaws made specifically for the QC Master Jaws. This allows the artist to switch quickly back to a traditional set of vise jaws without having to unthread. The pin holes measure 2.35 mm.

*Fits QC Classic or 3X Vise*

WATCH THE VIDEO



# QC WORKHOLDING FIXTURES



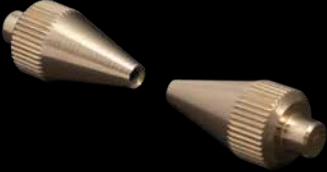
## Tapered Point Holders

500-506

Easily customized to create precise tension points on your work.

*For use in horizontal ring clamps.*

**WATCH THE VIDEO**



## Tapered Ball Holders

500-507

Ideal for holding spheres and round-shaped pieces.

*For use in horizontal ring clamps.*



## Shellac Cylinder

502-015

Use with Shellac to hold rings.

*For use in horizontal ring clamps.*



## Thermo-Loc® Cylinder

502-502

Use with Thermo-Loc to hold rings.

*For use in horizontal ring clamps.*

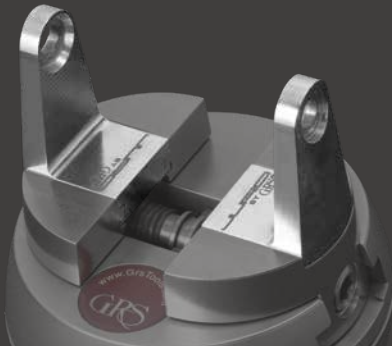


## Thermo-Loc® Engraver's Clamp

500-013

Use with Thermo-Loc to hold a variety of uniquely-shaped pieces.

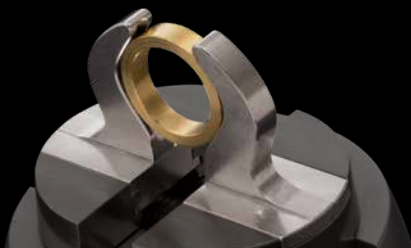
*Fits QC Classic Workholding Only*



## Horizontal Ring Clamps

500-010

Horizontal Ring Clamps is a key piece of the Jura Basic Set. It works to hold work horizontally when paired with the Brass Cones, Shellac Cylinder, Thermo-Loc Cylinder, and Inside Ring Holder Screw Set.



## Outside Ring Holder

500-009

A simple and efficient ring clamp. Great for focusing on a smaller portion of the piece or small inside ring jobs.

*Fits QC Classic or 3X Vise*



## Inside Engraving Ring Holder

500-503

This unique fixture holds rings from the outside, allowing easy access to the inside for engraving. Three thumb screws quickly secure the ring in place and specialized clamps allow the work to be rotated when the vise jaws are loosened.

*Fits QC Classic or 3X Vise*



## Inside Ring Holder Screw Set

500-011

Inside Ring Holder Screw Set uses an independent tension to expand collets while holding rings. It mounts perfectly in the Horizontal Ring Holder and is included in the Basic Set. Collets not included.



## Shellac Plate

500-014

Use with shellac to hold uniquely-shaped pieces. The unique texture of the fixture helps to secure the shellac while working.

*Fits QC Classic Workholding Only*

# Adapter for GRS<sup>®</sup> Standard Block

500-008

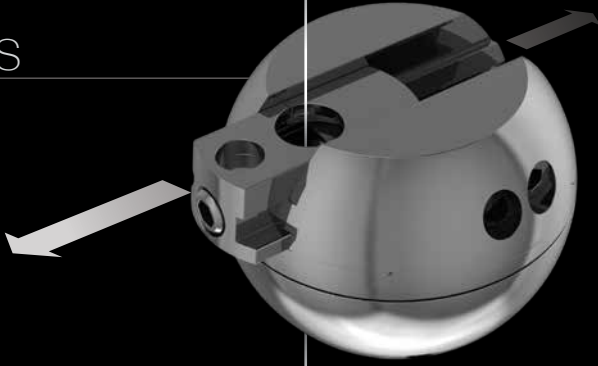
Utilize the entire Jura QC Workholding System in your GRS Standard Block. Quickly drops into the pin holes of your Standard Block.

WATCH THE VIDEO

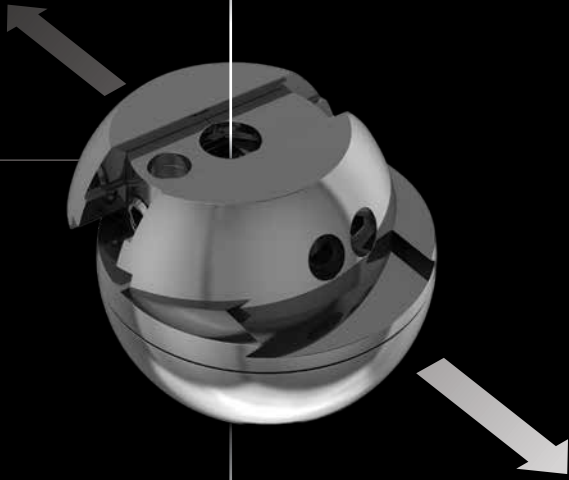


# STAY CENTERED

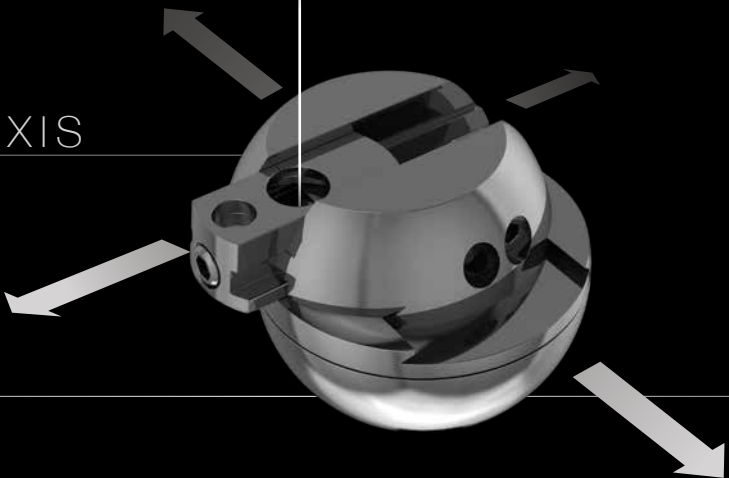
X AXIS



Y AXIS



X+Y AXIS





3X HOLDER ADDS  
THREE AXES

JURA 3X LINE

WATCH THE VIDEO



## 3X Starter Set

502-516

The 3X Starter Set is one of the most innovative workholding solutions to hit the jewelry industry. By creating a multi-axis approach, your work will never be out of center again. This system utilizes movement in every direction to ensure unlimited access. For setters using a microscope, this product will save time and frustration. The set comes with the 3X Holder which allows the user to pivot and manipulate the ring to the exact position desired. The orbital ball creates additional versatility, not just for ring holding, but can be used with other attachments in the 3X Line. Robust brass collets will ensure sturdy holding of rings. Jura Stackable Bases will keep work at a proper height depending on the attachment.

*Includes: XY Ball, Set of Jura Stackable Bases, 5 mm Hex Key, 3X Holder, 11 Brass Collets, 10 Plastic Collets, M6 Screw, Radius Divider, Orbital Jaws and Orbital Ball.*



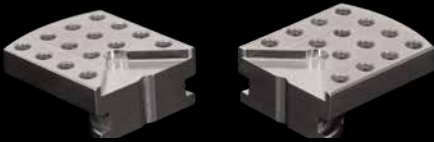




## Mini Chuck

502-505

Remain efficient during the work process with this great little drop-in attachment for making tools or holding work chuck-style.



## Flat Clamps with Pin Holes

502-078

This fixture holds flat plates or flat, round pendants. Accommodate larger pieces by placing pins in the holes.

*Fits QC Classic or 3X Vise*



## Pin Vise

502-507

This pin vise was designed to be used with the 3X Orbital Holder (included with the 3X Starter Set). By using the traditional design of a pin vise and adding the orbital approach, the user can clamp their work and keep it in center while also being able to tilt the pin vise.

WATCH THE VIDEO

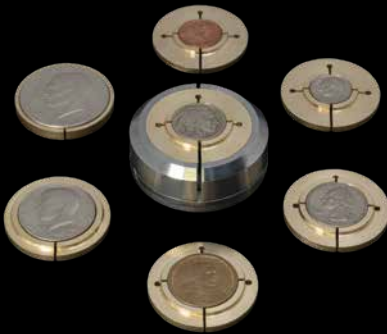




# Thermo-Loc® Clamps

502-518

Utilize the 3X System while holding odd-shaped pieces. Designed to help keep Thermo-Loc in place and your work secure.



# Hobo Nickel Holder

502-508

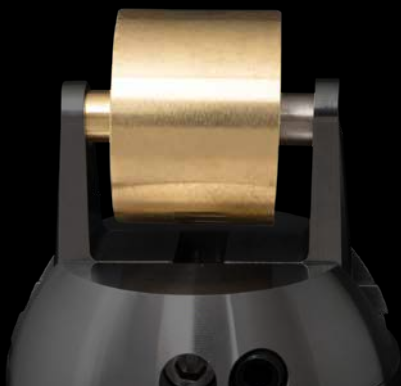
The Hobo Nickel Holder uses a unique brass collet system that has been designed specifically for the most popular coins artists work with. The outer portion of the vise provides a sturdy clamping system to reduce vibration. By attaching the orbital ball to the bottom, the artist gains the ability to tilt the fixture while being able to rotate their vise, keeping the working area centered under the microscope.

*Coins not included*

*Collets for Penny, Dime, Nickel, Quarter, Dollar, Half Dollar, Eisenhower Dollar*

**WATCH THE VIDEO**





## Watch Bracelet Fixture

523-520

This cylindrical fixture provides a great workholding solution for setting and engraving watch bands. Use with the horizontal ring clamps or the 3X Master Clamps for easy access to your work.

## Watch Bezel Collets

500-012



These collets are specially designed to hold a variety of watch bezel sizes. Collets can be used with the Horizontal, Vertical, and 3X holders to maximize access to your work. Includes eight double-sided collets: 21–23 mm, 22–24 mm, 25–27 mm, 26–28 mm, 29–31 mm, 30–32 mm, 33–35 mm, and 34–36 mm.



## 4-Jaw Chuck

502-509

This robust and versatile fixture is the ultimate holding option for uniquely-shaped items. Four independent jaws can be adjusted in a variety of different configurations to hold your work securely.

WATCH THE VIDEO





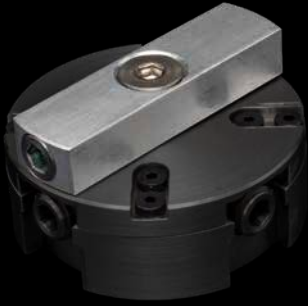
# Shellac Plate

502-082

Secure your work using shellac and take advantage of the benefits of using the 3X System.

**WATCH THE VIDEO**





# Aluminum Adapter Block

500-545

Turn any 3X workholding fixture into a tool that can be used in standard vise jaws. The Aluminum Adapter Block can be attached using the threads on the bottom of the 3X fixtures, allowing them to be clamped in any vise.

WATCH THE VIDEO



# Shellac Tubes

502-506

Shellac Tubes drop into the 3X Master clamps to hold small pieces such as earrings, pendants, or other items. The ability to use two shellac tubes at a time allows for greater efficiency. Available in four sizes to save time heating.

*(1) 39 mm tube, (2) 20 mm tubes, (2) 15 mm tubes, (2) 11 mm tubes*

WATCH THE VIDEO



# Replacement Orbital

500-546

Avoid time spent switching the Orbital Balls from one fixture to another by adding these replacement balls to fixtures you use regularly in the Orbital Jaws.



## Digital Divider

523-021

This compact-style digital divider is great for precision layout. The hardened steel jaws can be sharpened to your desired points and have a maximum opening of 37.6 mm. This set of dividers features a sleek metal body and a large digital display. Overall length is 100 mm.

## Jura Stackable Vise Bases

*Also Sold Individually:*



523-032

### Set of 3

Set of three bases are designed to keep work at a consistent height, depending on which Jura fixture you are using. They are stackable and sturdy. This set of 3 stackable bases is included with the 3X Starter Set.



### Small

523-017



### Medium

523-018



### Large

523-019

WATCH THE VIDEO



# Jura Microscope Stand for Meiji

502-023

A sturdy and simple solution for holding Meiji microscopes. This stand can be set at the desired height and then easily swung to the side for work that does not require a microscope. Includes focus drive with an 84 mm internal diameter.



## 5 mm Hex Key

523-020

This large handle 5 mm hex key is great for getting extra leverage when tightening down your vise jaws.

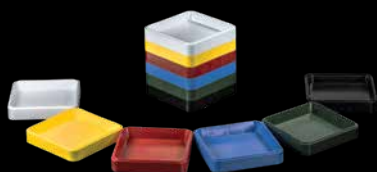
## Hand Chucks

500-521

**Round & Stub Head** *Set of 10*

The Jura hand chucks are great for use with stone pushers, beading tools, bead splitters, burnishing tools, and more. The half-round handles provide a great reference point when using beading tools. The round handles are ideal for burnishing and bead splitting.





## Colored Stone Trays

500-522

A set of six colored trays are perfect for separating different stone sizes and staying organized. They are stackable for space savings and designed to easily access your stones.



## Stone Organizer

502-514

Keep your stones organized and in one place. Forty smaller square boxes allow you to create your own organization system within a larger box.



## Micromotor Handpiece Stand

500-525

Keeping your micromotor within reach and off the bench top makes the holder a great addition to your bench.





WATCH THE VIDEO



## Ceramic Scribe & Carbide Pick

523-005

This set of tools is great for doing layout and positioning stones. The ceramic scribe doesn't catch on metal like traditional scribes. The carbide pick can have many uses such as moving or adjusting stones.

*Also Sold Individually:*

**Ceramic Scribe    Carbide Pick**

523-006

523-004



## Small Goods Organizer

523-011

A great option to keep your tweezers, hex key, scribe, and pick within reach.

## Tweezers

523-001

An ideal solution for picking up stones, drills, burs, or other items.



## Plastic Collets

500-504

Replacement set of plastic collets. Fits Jura QC and 3X systems. This set of 10 collets is for rings sized 13–22 mm.



## Brass Collets

502-504

This set of 11 brass collets is perfect for use with Jura QC ring fixtures. Durable construction will withstand hammering. It also includes a radius divider for quick and easy layout.



# Ceramic Polishing Stones Round 2.35 mm

For use in micromotor handpiece when polishing and finishing. Available in three grits.

**Red/Fine  
1200 Grit**

602-422

**Orange/Rough  
400 Grit**

602-426

**Blue/Medium  
800 Grit**

602-424



# C-Max Round Blank — 2.35 mm

022-393

Industry-leading carbide gravers.

*Length: 45 mm. Use with Jura QC 2.35mm*



# DEALER DIRECTORY

## Austria 1:

### Felber's Nachfolger

Siebensterngasse 30  
1070 Vienna  
Phone +43 1 523 24 73-0  
[www.j-felber.at](http://www.j-felber.at)

## Austria 2:

### AuruTec Schmuck- und

Uhrentechnik Baumgartner KG  
Auergerasse 9  
6170 Zirl  
Phone +43 664 535 6770  
[www.j-felber.at](http://www.j-felber.at)

## Belgium:

### Alexandre BVBA

Appelmansstraat 25-27  
Empire Shopping Center  
2018 Antwerp  
Phone +32 3 213 00 39  
[www.alexandreschool.com](http://www.alexandreschool.com)

## Cyprus:

### B.J.P – Panagiotidou Elli & Sia Epe

Villara 1  
54625 Thessaloniki  
Phone +30 2310555270  
[www.bjp.gr](http://www.bjp.gr)

## Czech Republic:

### Advantage-fl.cz s.r.o.

Soukenická 11  
11000 Prague 1  
Phone +420 222 310 298  
[www.advantage-fl.cz](http://www.advantage-fl.cz)

## Denmark:

### Aktiv Guld A/S

Vallensbækvej 46  
2625 Vallensbæk  
Phone +45 43 66 20 00  
[www.aktivguld.com](http://www.aktivguld.com)

## Finland:

### K.A. Rasmussen Oy

Etelaranta 14  
00130 Helsinki  
Phone +358 10 337 50 00  
[www.rasmussen.fi](http://www.rasmussen.fi)

## France 1:

### Tena Butty

116, Chemin de Mialouze  
26130 Montsegur Sur Lauzon  
Phone +33 475 98 10 22  
[www.tena-butty.com](http://www.tena-butty.com)

## France 2:

### TBRP Paris (Pouget Pellerin, Robur)

15, rue de Montmorency  
75003 Paris  
Phone +33 1 42 74 44 11  
[www.pouget-pellerin.com](http://www.pouget-pellerin.com)  
[www.robur-fr.com](http://www.robur-fr.com)

## France 3:

### Schwartzmann Fisseau Cochot

12 rue Rene Payot  
25503 Morteau  
Phone +33 381 67 18 34  
[www.schwartzmann.com](http://www.schwartzmann.com)

## Germany 1:

### Rudolf Flume Technik GmbH

Hachestrasse 66  
45127 Essen  
Phone +49 201 1899 0  
[www.flume.de](http://www.flume.de)

## Germany 2:

### Horbach GmbH

Hauptstrasse 139 A  
55743 Idar-Oberstein  
Phone +49 6781 458 97-0  
[www.horbach-technik.de](http://www.horbach-technik.de)

## Greece:

### B.J.P – Panagiotidou Elli & Sia Epe

Villara 1  
54625 Thessaloniki  
Phone +30 23105 55270  
[www.bjp.gr](http://www.bjp.gr)

## Iceland:

### Handverkshúsið EHF

Dalvegi 10-14  
201 Kopavogur  
Phone +354 511 0014  
[www.handverkshusid.is](http://www.handverkshusid.is)

## Ireland 1:

### Betts Metal Sales Limited

49-63 Spencer Street  
Birmingham, B18 6DE  
Phone +44 121 233 2413  
[www.bettsmetalsales.com](http://www.bettsmetalsales.com)

## Ireland 2:

### Cooksongold

59-83 Vittoria Street  
Birmingham, B1 3NZ  
Phone +44 121 200 2120  
[www.cooksongold.com](http://www.cooksongold.com)

## Italy 1:

### Luigi Dal Trozzo S.A.S.

Via Claudio Treves 26  
20090 Vimodrone  
Phone +39 02 2885871  
[www.luigidaltrozzo.it](http://www.luigidaltrozzo.it)

## Italy 2:

### Garbarino & Titonel srl

Via del Lavoro 3  
15048 Valenza  
Phone +39 0131 924 264  
[www.garbarinotitonel.com](http://www.garbarinotitonel.com)

## Netherlands 1:

### **Bijou Moderne B.V.**

Edisonlaan 36-38  
2665 JC Bleiswijk  
Phone +31 10 529 66 00  
[www.bijoumoderne.nl](http://www.bijoumoderne.nl)

## Netherlands 2:

### **Diaset BV.**

Utrecht  
Phone +31 30 230 02 14  
[www.diaset.nl](http://www.diaset.nl)

## Norway:

### **K.A.Rasmussen AS**

Postboks 4455  
2326 Hamar  
Phone +47 625 12 710  
[karasmussen.com](http://karasmussen.com)

## Poland 1:

### **W. Kociuba S.J.**

ul. Rakowicka 1  
31-511 Krakow  
Phone +48 12 430 36 79  
[www.wkociuba.pl](http://www.wkociuba.pl)

## Poland 2:

### **Firma Jubilerska K. Brzuchowski**

ul. Hetmańska 20  
40-560 Katowice  
Phone +48 50 173 30 93  
[brzuchowski.pl](http://brzuchowski.pl)

## Portugal:

### **Maquinoiro LDA**

Rua Engenheiro Adelino Amaro da Costa  
1140/44  
4420-005 Gondomar  
Phone +351 22 483 55 51  
[www.maquinoiro.pt](http://www.maquinoiro.pt)

## Russia:

### **Jewellery Air**

Ul. Bumazhnaya, 17 / 109  
190020 St. Petersburg  
Phone +7 495 16 28 477  
[www.jewelleryair.com](http://www.jewelleryair.com)

## Slovakia:

### **Advantage-fl.cz s.r.o.**

Soukenická 11  
11000 Prague 1  
Phone +420 222 310 298  
[www.advantage-fl.cz](http://www.advantage-fl.cz)

## Spain:

### **Chamorro y Moreno, S.A**

C/ Isla de Sicilia  
1 - 3º B, Edificio Guadalcanal  
28034 Madrid  
Phone +34 91 315 20 49  
[www.comrashop.es](http://www.comrashop.es)

## Sweden 1:

### **Sargenta AB**

Singelgatan 6B  
212 28 Malmö  
Phone +46 401 26 550  
[www.sargenta.se](http://www.sargenta.se)

## Sweden 2:

### **Aktiv Guld AB**

Vallensbækvej 46  
2625 Vallensbæk  
Phone +46 22 27 80 100  
[www.aktivguld.com](http://www.aktivguld.com)

## Switzerland:

### **Artsupport GmbH**

Glattalstrasse 222  
8153 Rumlang  
Phone +41 44 818 18 18  
[www.artsupport.ch](http://www.artsupport.ch)

## Turkey

### **Piramit Teknik Malzene SAN. VE TIC. A.S.**

Vizyon Park Merkez Plaza C1  
Blok Zemin Kat No. 39/40  
34197 Yenibosna / Istanbul  
Phone +90 212 511 11 86  
[www.piramitek.com](http://www.piramitek.com)

## United Kingdom 1:

### **Betts Metal Sales Limited**

49-63 Spencer Street  
Birmingham, B18 6DE  
Phone +44 121 233 2413  
[www.bettsmetalsales.com](http://www.bettsmetalsales.com)

## United Kingdom 2:

### **Cooksongold**

59-83 Vittoria Street  
Birmingham, B1 3NZ  
Phone +44 121 200 2120  
[www.cooksongold.com](http://www.cooksongold.com)

## OTHER COUNTRIES



Albania, Algeria, Belarus, Bosnia and Herzegovina, Bulgaria, Croatia, Estonia, Hungary, Latvia, Libya, Lithuania, Luxembourg, Macedonia, Malta, Mauretania, Moldova, Montenegro, Morocco, Romania, Serbia, Slovenia, Tunisia, Ukraine:

*The official European website about professional tools for stone setters, engravers and jewellers. For all your tools, training and support!*

[grseurope.com](http://grseurope.com)

[info@grseurope.com](mailto:info@grseurope.com)

[#grseurope](https://www.instagram.com/grseurope)

JURA  
BY GRS® CATALOGUE

WORKHOLDING SOLUTIONS FROM THE MIND OF

**JURCO**



**K&A Rasmussen**  
NORWAY

[karasmussen.com](http://karasmussen.com)

[salg@karasmussen.com](mailto:salg@karasmussen.com)